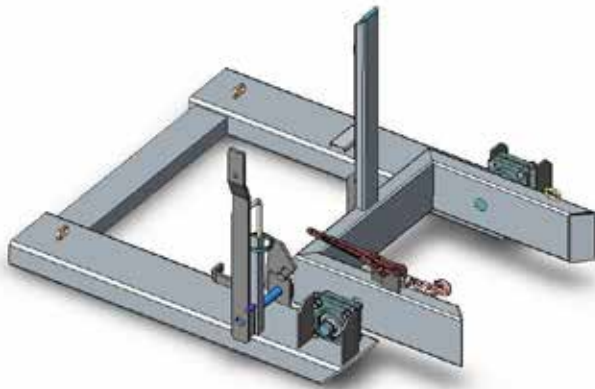


Type WB-240 Wheelie Bin Tipper

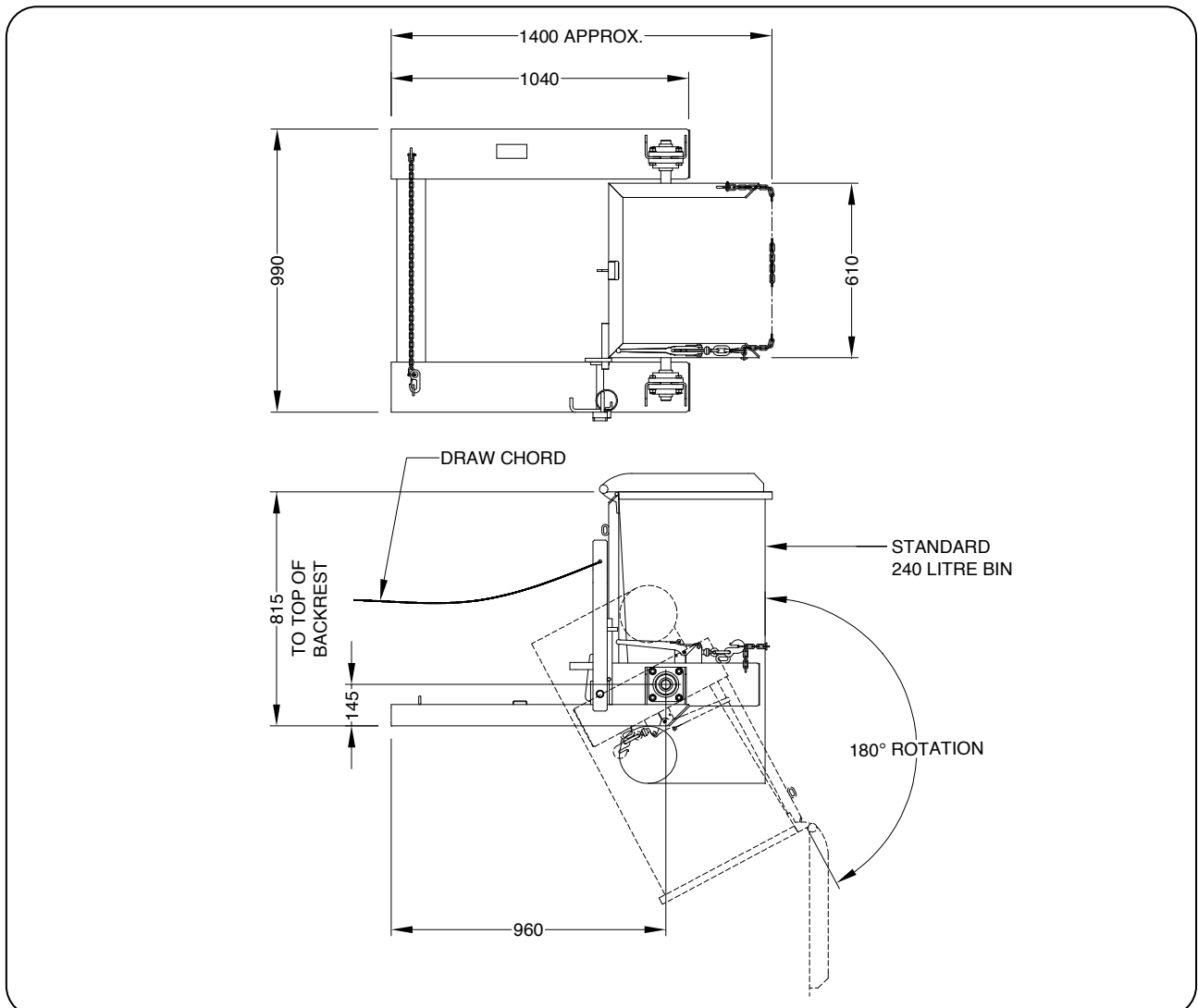
The type WB-240 Wheelie Bin Tipper has been designed for emptying standard 240 litre plastic bins. The Bin is secured in the cradle by a Safety Chain allowing the bin to be lifted/transported about the workplace and emptied. The tipping operation is simple and safe with the operator never having to leave his seat using a draw chord to activate the tipping action.



Standard finish on all Wheelie Bin Tippers is painted enamel.

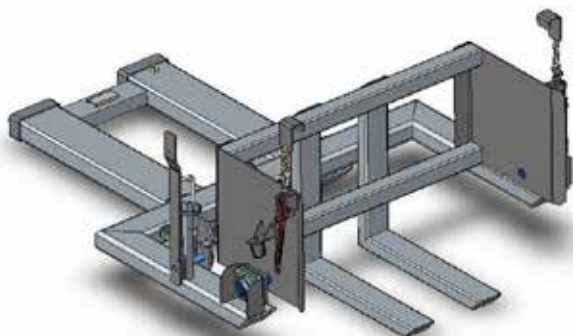
SPECIFICATIONS:

- Safe Working Load (SWL) 500kg
- Load Centre 1000mm
- Unit Weight 100kg
- Pocket Size 165 x 65
- Pocket Centres 815mm
- Capable of 180° Rotation
- Horizontal C of G 700mm
- Vertical C of G 100mm



Type WB-660 Wheelie Bin Tipper

The type WB-660 Wheelie Bin Tipper has been designed for emptying standard 660 litre plastic bins. The Bin is secured in the cradle by two side Clamps allowing the bin to be lifted/transported about the workplace and emptied. The tipping operation is simple and safe with the operator never having to leave his seat using a draw chord to activate the tipping action.



Standard finish on all Wheelie Bin Tippers is painted enamel.

SPECIFICATIONS:

- Safe Working Load (SWL) 500kg
- Load Centre 1700mm
- Unit Weight 140kg
- Pocket Size 165 x 65
- Pocket Centres 485mm
- 145° Rotation
- Horizontal C of G 1100mm
- Vertical C of G 100mm

