

Type BWB-15 Bulk Waste Bin

The type BWB-15 Bulk Waste Bin is ideal for building and mining sites using overhead cranes. This Bin is designed to suit your application with a capacity up to 3.0 Tonne Safe Working Load (SWL).

Lifting Chain Set NOT supplied with unit.

For capacities greater than 3.0 Tonne please refer to the type BWB-30 Bulk Waste Bin specifications.

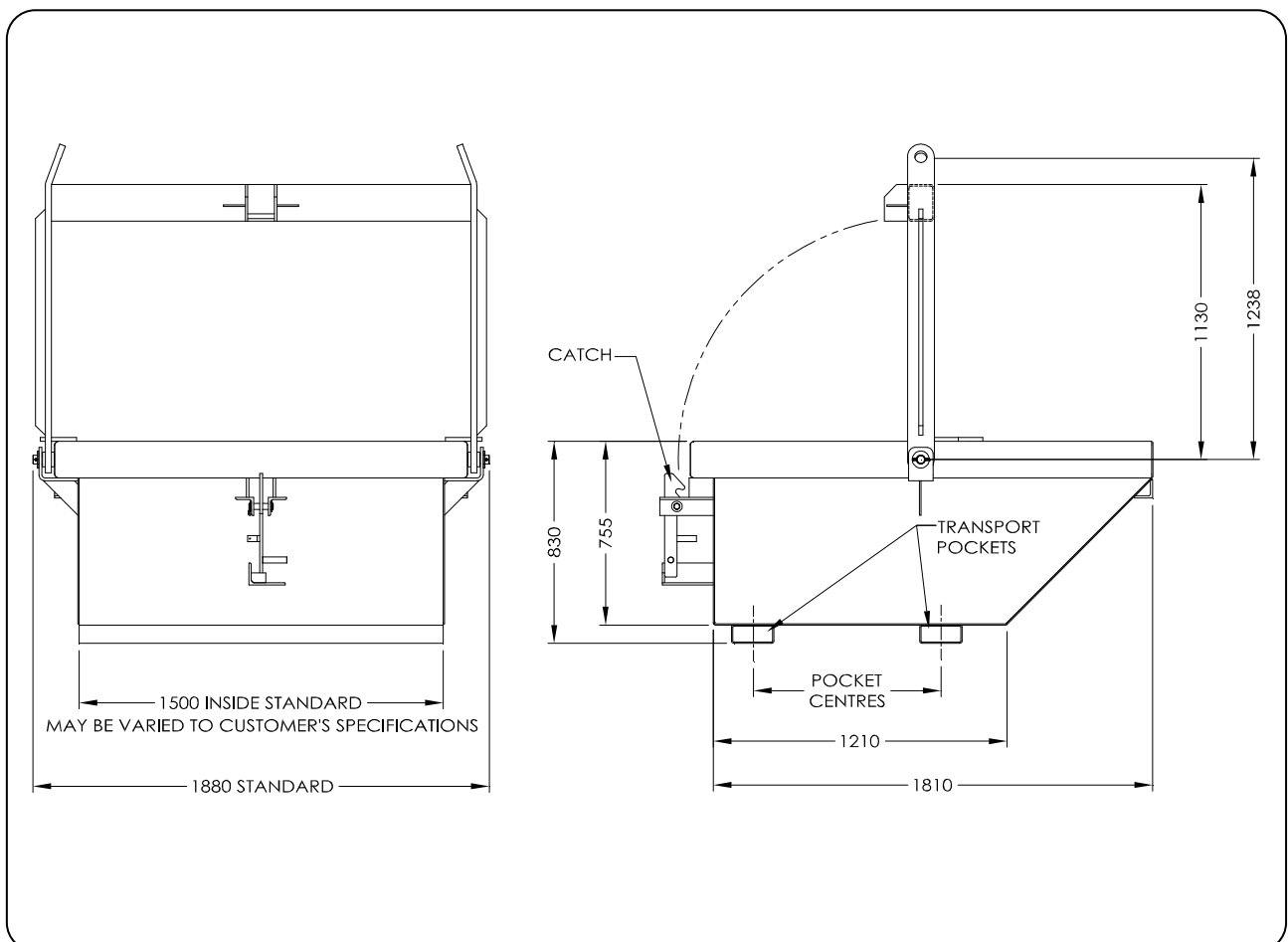


(Standard BWB-15 model shown)

SPECIFICATIONS:

(for Standard BWB-15 3T models)

- Pocket Size 165 x 65mm
- Pocket Centres 775mm
- Safe Working Load 3T
- Unit Weight 560kg
- Volume Capacity 1.5 cu m



Type BWB-30 Bulk Waste Bin



The type BWB-30 Bulk Waste Bin is ideal for building and mining sites using overhead cranes. This Bin is designed to suit your application with a capacity up to 5.0 Tonne Safe Working Load (SWL).

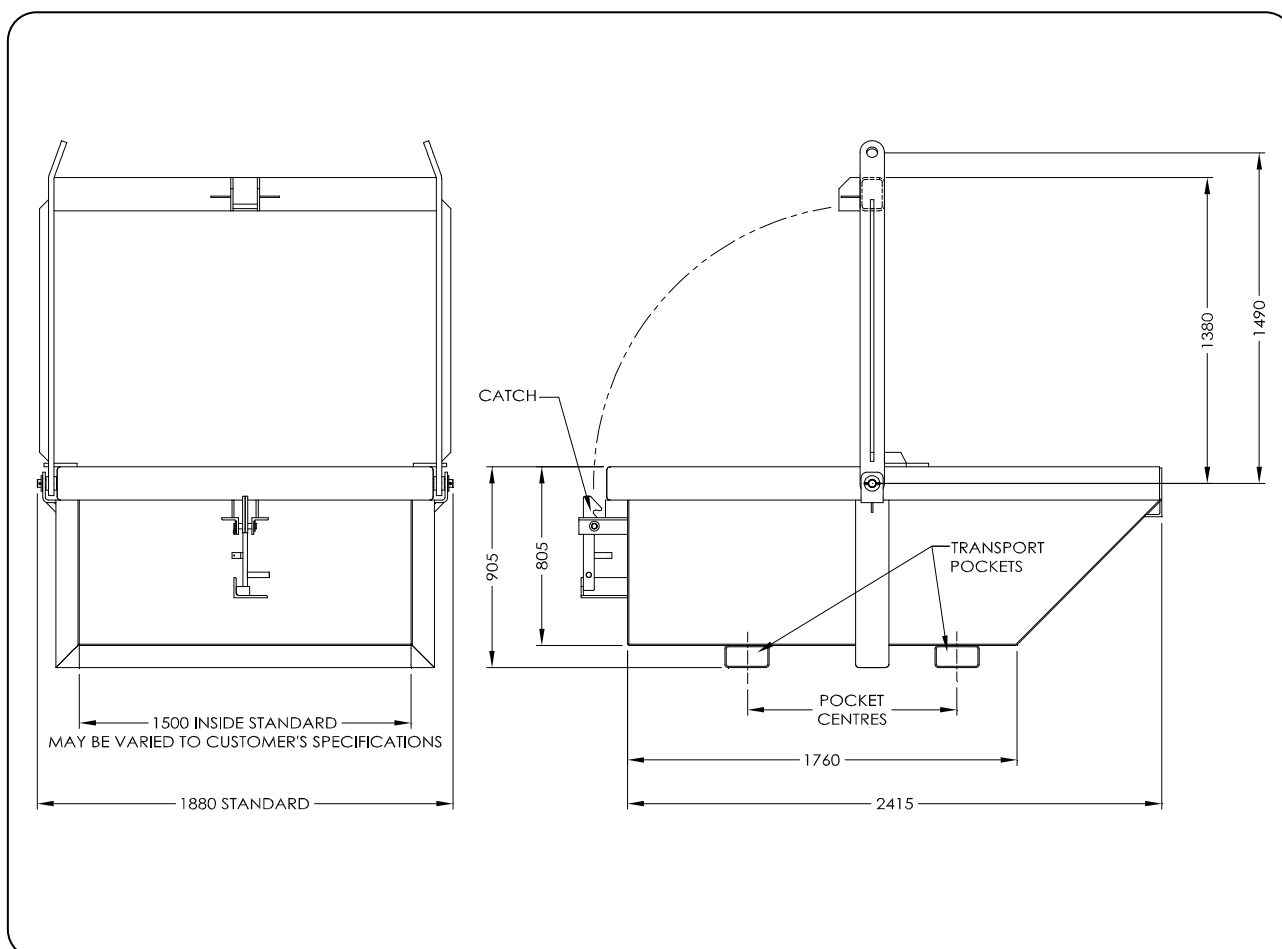
Lifting Chain Set NOT supplied with unit.

For capacities of 3.0 Tonnes or less, please refer to the type BWB-15 Bulk Waste Bin specifications.

SPECIFICATIONS: (for Standard BWB-30 5T models)

- Pocket Size 185 x 85mm
- Pocket Centres 950mm
- Safe Working Load 5T
- Unit Weight 825kg
- Volume Capacity 3.0 cu m

(Standard BWB-30 model shown)



Type BWB-50 Bulk Waste Bin



The type BWB-50 Bulk Waste Bin is ideal for large scale operations on building and mining sites using overhead cranes. This Bin is designed to suit your application with a capacity up to 14.0 Tonne Safe Working Load (SWL).

Lifting Chain Set is supplied with unit.

For capacities of 5.0 Tonnes or less, please refer to the type BWB-15 and BWB-30 Bulk Waste Bin specifications.

SPECIFICATIONS:

(for standard BWB-50 14T models)

- Pocket Size 180 x 80mm
- Pocket Centres 950mm
- Safe Working Load 14T
- Unit Weight 2560kg
- Volume Capacity 5.0 cu m

(Standard BWB-50 model shown)

