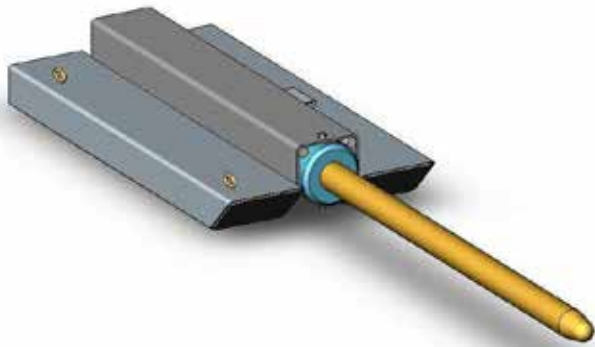


Type RPS2N Slip-On Roll Prong

The type RPS2N Slip-On Roll Prong is suitable for fabric, cable and coil products. Although this Roll Prong can be used for carpet handling, usage is generally restricted to larger Forklifts due to the extended load centre created by the length of the tines. These attachments quickly adapt to almost any Forklift requiring only the connection of the Safety Chain to prevent unintentional disengagement. Prongs are manufactured from high tensile steel and can be made to any length. The Safe Working Load (SWL) of this unit varies depending on Prong chosen.



SPECIFICATIONS:

- Safe Working Load (SWL) – refer chart below
- Lost Load 1040mm
- Unit Weight – refer chart below
- Standard finish – painted enamel
- Refer diagram below for all other specifications

(RPS2N with Ø70mm Prong shown)

