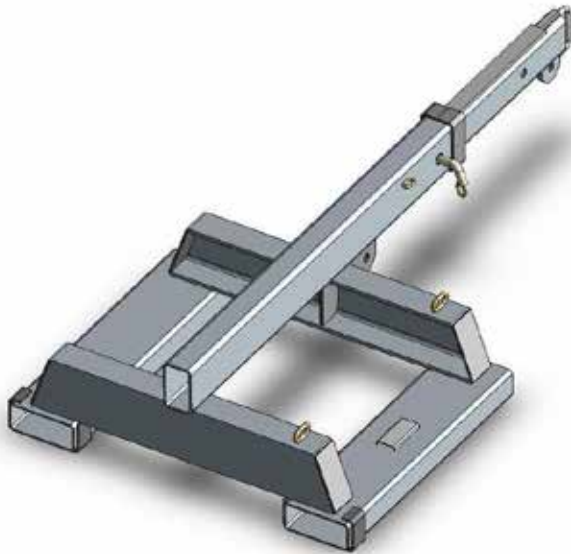


Type SFJS2.5 Fixed Jib (Short)

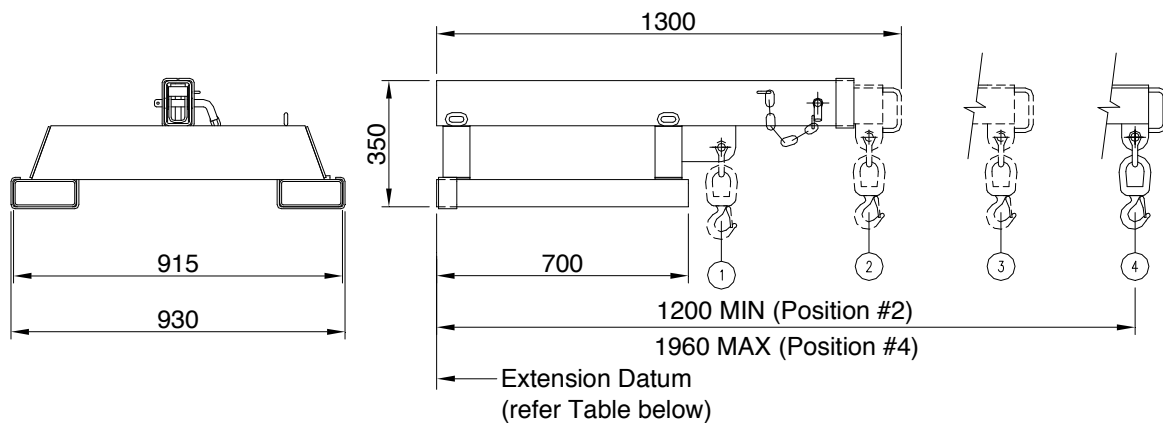
The type SFJS2.5 Fixed Jib (Short) is designed as an affordable general purpose Jib able to manoeuvre in confined spaces, with a 1.96 metre reach when fully extended. This Jib has been designed with wide pockets suitable for Forklifts with special hydraulic Tine Positioners. This slip-on Forklift attachment is held to the Forklift by a safety chain. The Jibs overall length when closed is 1.3 metres.



Supplied with safety swivel Hook and Shackle.

SPECIFICATIONS:

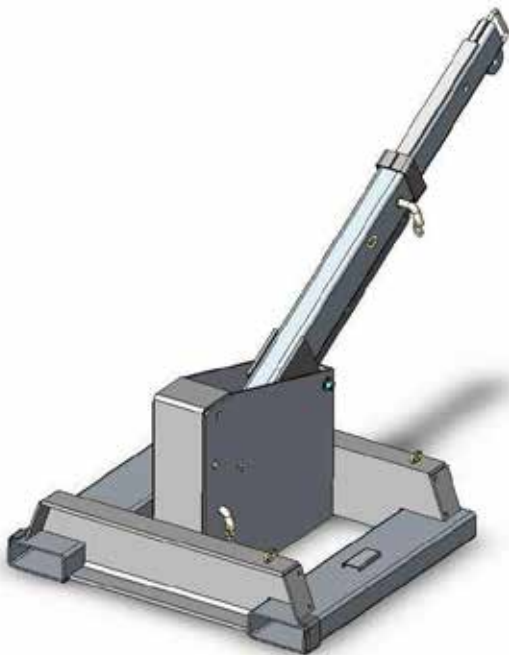
- Safe Working Load (SWL) 2500kg Max.
- Unit Weight 125kg
- Load Centre 790mm
- Pocket Size 165 x 65
- Pocket Centres 740 mm
- Horizontal C of G 650mm
- Vertical C of G 100mm
- Zinc Finish



SAFE WORKING LOADS (SWL) PER POSITION

POSITION	1	2	3	4
EXTENSION (mm)	790	1200	1580	1960
SWL (kg)	2500	1200	900	750

Type STJS2.5 Tilt Jib (Short)

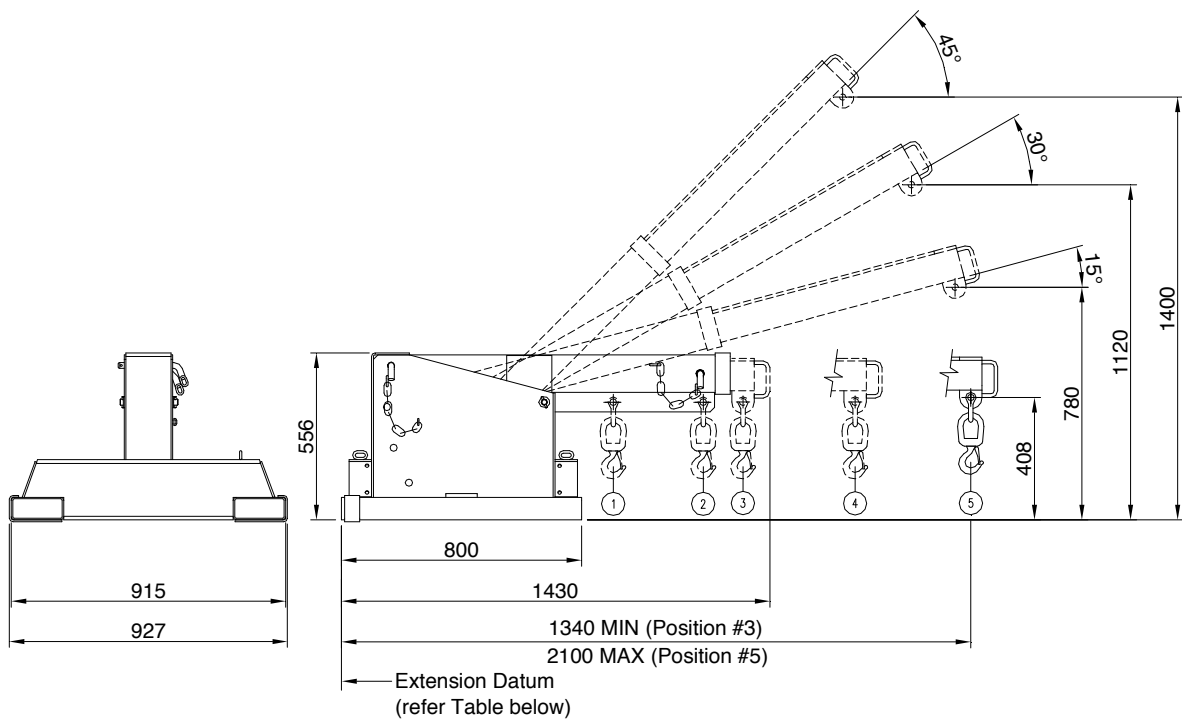


The type STJS2.5 Tilt Jib (Short) is designed with a tilt facility allowing extra height to compensate for the hook and sling length lost when lifting with a Jib attachment. A maximum height of 1.4 metres can be gained while the Jib can be fully extended to 2.1 metres. This Jib has been designed with wide pockets suitable for Forklifts with special hydraulic Tine Positioners. This slip-on attachment is held to the Forklift by a safety chain. The Jibs overall length when closed is 1.43 metres.

Supplied with safety swivel Hook and Shackle.

SPECIFICATIONS:

- Safe Working Load (SWL) 2500kg Max.
- Unit Weight 160kg
- Load Centre 905mm
- Pocket Size 165 x 65
- Pocket Centres 740 mm
- Horizontal C of G 650mm
- Vertical C of G 300mm
- Zinc Finish

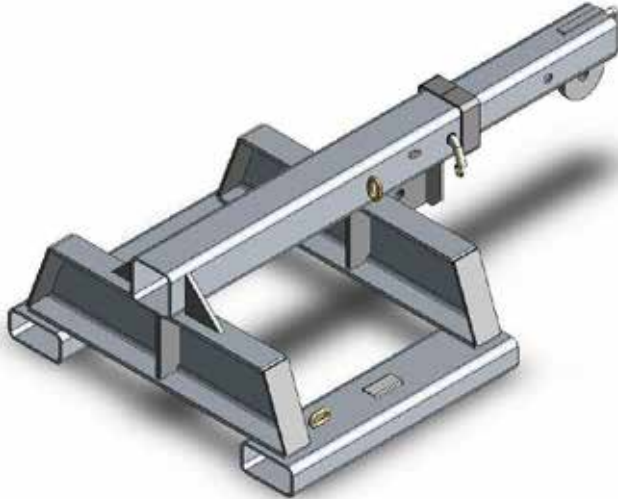


SAFE WORKING LOADS (SWL) PER POSITION

POSITION	1	2	3	4	5
EXTENSION (mm)	905	1205	1340	1720	2100
SWL (kg)	2500	1800	1200	900	750

Type SFJS7.5 Fixed Jib (Short)

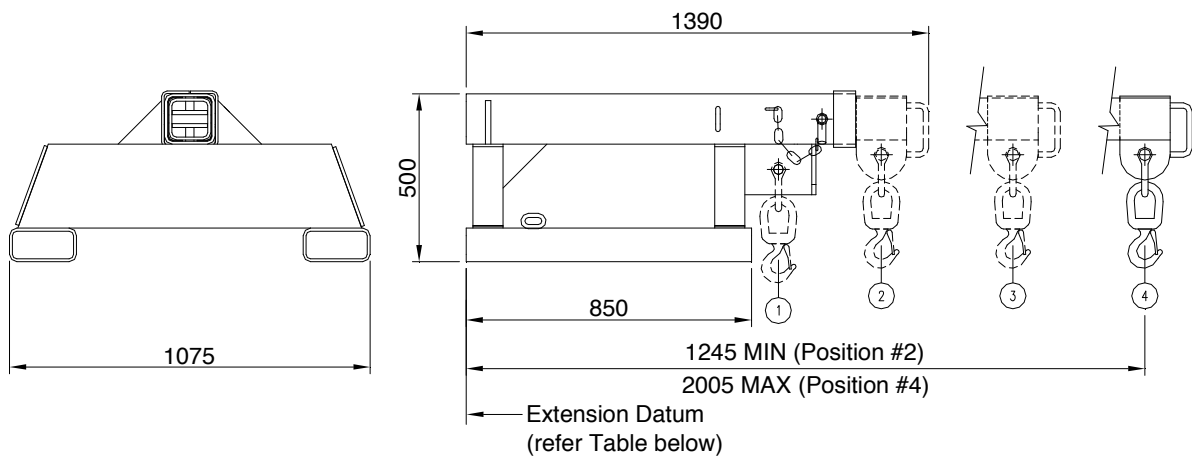
The type SFJS7.5 Fixed Jib (Short) is designed as an affordable general purpose Jib able to manoeuvre in confined spaces, with a 2.0 metre reach when fully extended. This Jib has been designed with wide pockets suitable for Forklifts with special hydraulic Tine Positioners. This slip-on Forklift attachment is held to the Forklift by a safety chain. The Jibs overall length when closed is 1.39 metres.



Supplied with safety swivel Hook and Shackle.

SPECIFICATIONS:

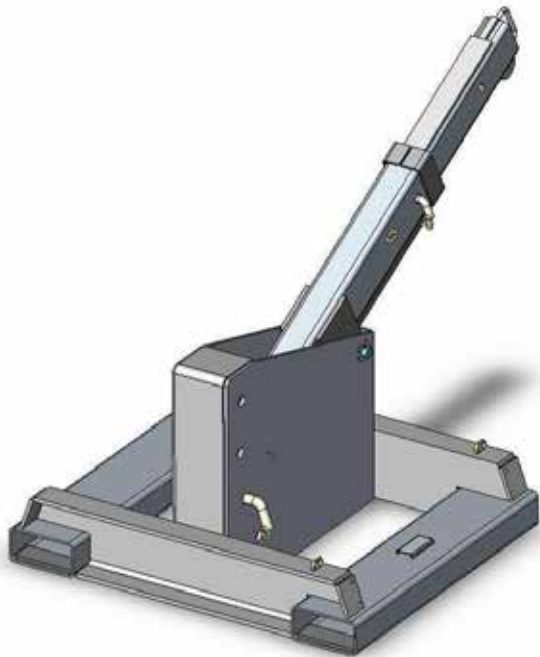
- Safe Working Load (SWL) 7500kg Max.
- Unit Weight 320kg
- Load Centre 930mm
- Pocket Size 180 x 80
- Pocket Centres 875 mm
- Horizontal C of G 740mm
- Vertical C of G 100mm
- Zinc Finish



SAFE WORKING LOADS (SWL) PER POSITION

POSITION	1	2	3	4
EXTENSION (mm)	930	1245	1625	2005
SWL (kg)	7500	3600	2700	2250

Type STJS5 Tilt Jib (Short)

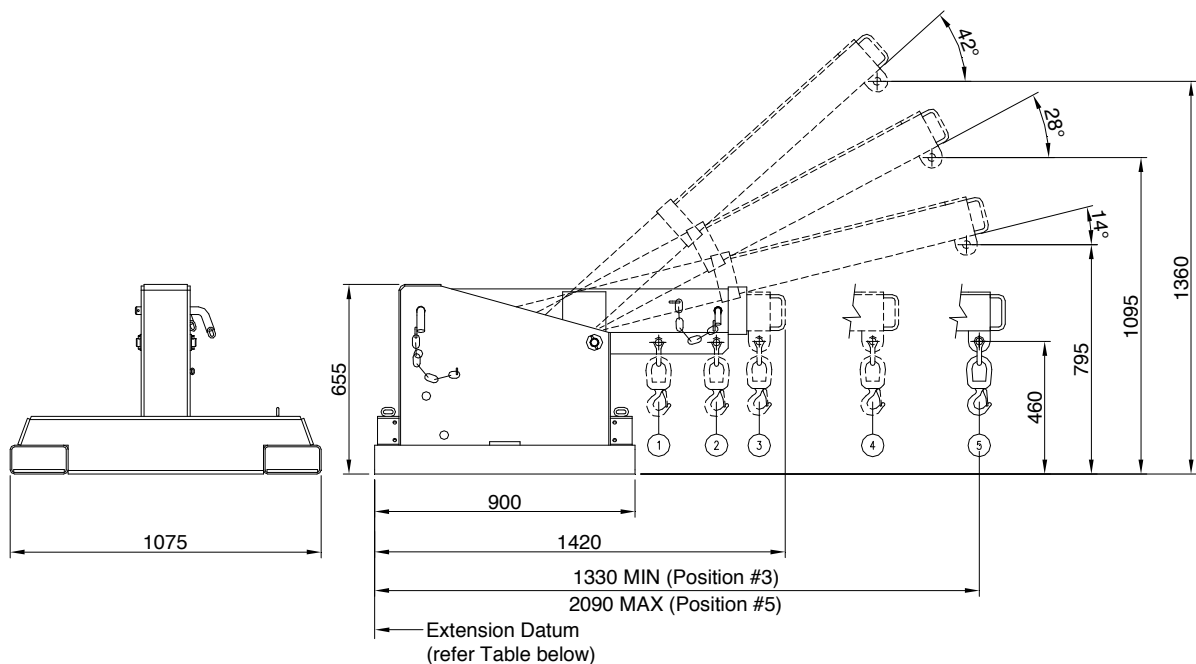


The type STJS5 Tilt Jib (Short) is designed with a tilt facility allowing extra height to compensate for the hook and sling length lost when lifting with a Jib attachment. A maximum height of 1.36 metres can be gained while the Jib can be fully extended to 2.09 metres. This Jib has been designed with wide pockets suitable for Forklifts with special hydraulic Tine Positioners. This slip-on attachment is held to the Forklift by a safety chain. The Jibs overall length when closed is 1.42 metres.

Supplied with safety swivel Hook and Shackle.

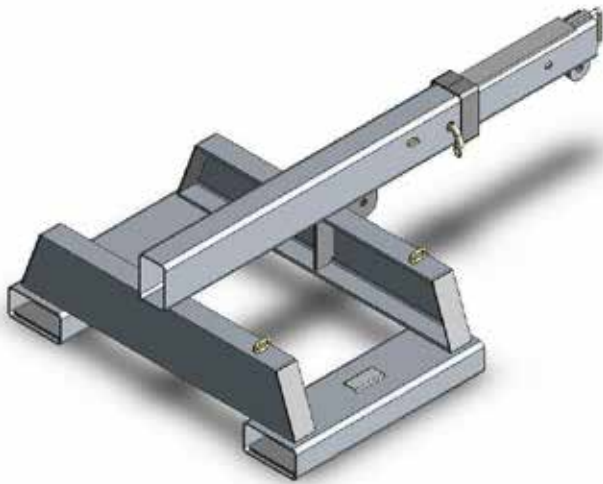
SPECIFICATIONS:

- Safe Working Load (SWL) 4750kg Max.
- Unit Weight 210kg
- Load Centre 980mm
- Pocket Size 185 x 75
- Pocket Centres 875 mm
- Horizontal C of G 650mm
- Vertical C of G 300mm
- Zinc Finish



SAFE WORKING LOADS (SWL) PER POSITION					
POSITION	1	2	3	4	5
EXTENSION (mm)	980	1180	1330	1710	2090
SWL (kg)	4750	3600	2400	1800	1500

Type SFJS5 Fixed Jib (Short)

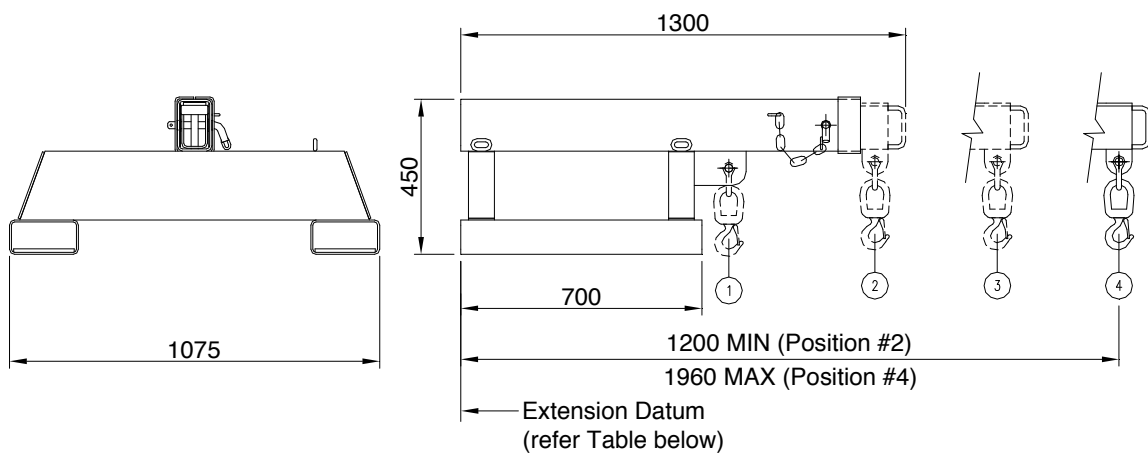


The type SFJS5 Fixed Jib (Short) is designed as an affordable general purpose Jib able to manoeuvre in confined spaces, with a 1.96 metre reach when fully extended. This Jib has been designed with wide pockets suitable for Forklifts with special hydraulic Tine Positioners. This slip-on Forklift attachment is held to the Forklift by a safety chain. The Jibs overall length when closed is 1.3 metres.

Supplied with safety swivel Hook and Shackle.

SPECIFICATIONS:

- Safe Working Load (SWL) 4750kg Max.
- Unit Weight 160kg
- Load Centre 780mm
- Pocket Size 185 x 75
- Pocket Centres 875 mm
- Horizontal C of G 650mm
- Vertical C of G 100mm
- Zinc Finish



SAFE WORKING LOADS (SWL) PER POSITION

POSITION	1	2	3	4
EXTENSION (mm)	780	1200	1580	1960
SWL (kg)	4750	2400	1800	1500