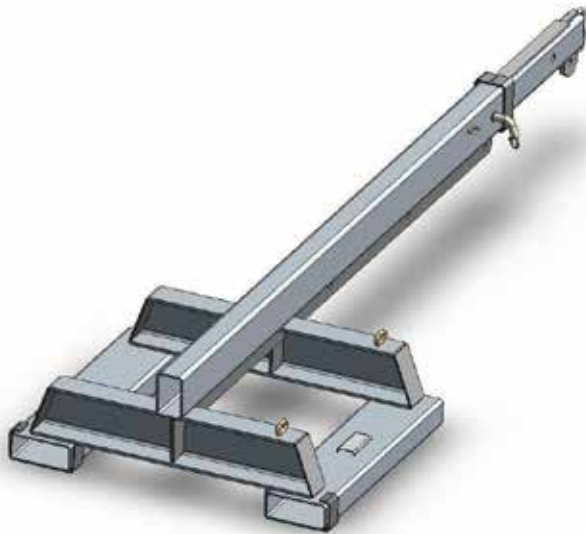


Type SFJL2.5 Fixed Jib (Long)

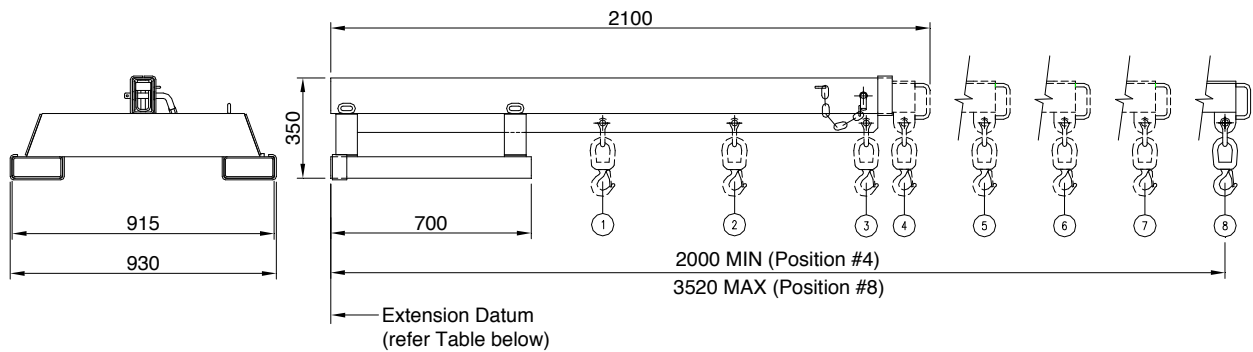
The type SFJL2.5 Fixed Jib (Long) is designed as an affordable general purpose Jib with a 3.52 metre reach when fully extended. This Jib has been designed with wide pockets suitable for Forklifts with special hydraulic Tine Positioners. This slip-on Forklift attachment is held to the Forklift by a safety chain. The Jibs overall length when closed is 2.1 metres.



Supplied with safety swivel Hook and Shackle.

SPECIFICATIONS:

- Safe Working Load (SWL) 2500kg Max.
- Unit Weight 155kg
- Load Centre 950mm
- Pocket Size 165 x 65
- Pocket Centres 740 mm
- Horizontal C of G 1300mm
- Vertical C of G 100mm
- Zinc Finish

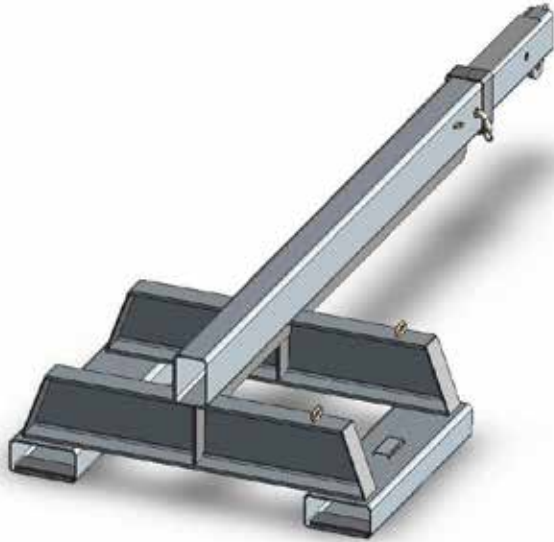


SAFE WORKING LOADS (SWL) PER POSITION								
POSITION	1	2	3	4	5	6	7	8
EXTENSION (mm)	950	1410	1870	2000	2380	2760	3140	3520
SWL (kg)	2500	2500	1900	1650	1250	650	380	240

Type SFJL5 Fixed Jib (Long)

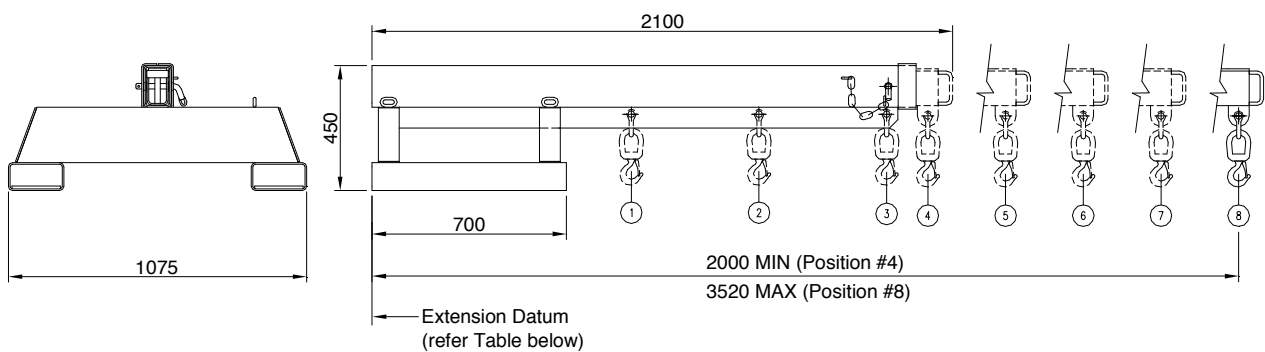
The type SFJL5 Fixed Jib (Long) is designed as an affordable general purpose Jib with a 3.52 metre reach when fully extended. This Jib has been designed with wide pockets suitable for Forklifts with special hydraulic Tine Positioners. This slip-on Forklift attachment is held to the Forklift by a safety chain. The Jibs overall length when closed is 2.1 metres.

Supplied with safety swivel Hook and Shackle.



SPECIFICATIONS:

- Safe Working Load (SWL) 4750kg Max.
- Unit Weight 200kg
- Load Centre 950mm
- Pocket Size 185 x 75
- Pocket Centres 875 mm
- Horizontal C of G 1300mm
- Vertical C of G 100mm
- Zinc Finish



SAFE WORKING LOADS (SWL) PER POSITION

POSITION	1	2	3	4	5	6	7	8
EXTENSION (mm)	935	1395	1855	2000	2380	2760	3140	3520
SWL (kg)	4750	4275	3800	3300	2500	1300	760	480

Type STJL2.5 Tilt Jib (Long)

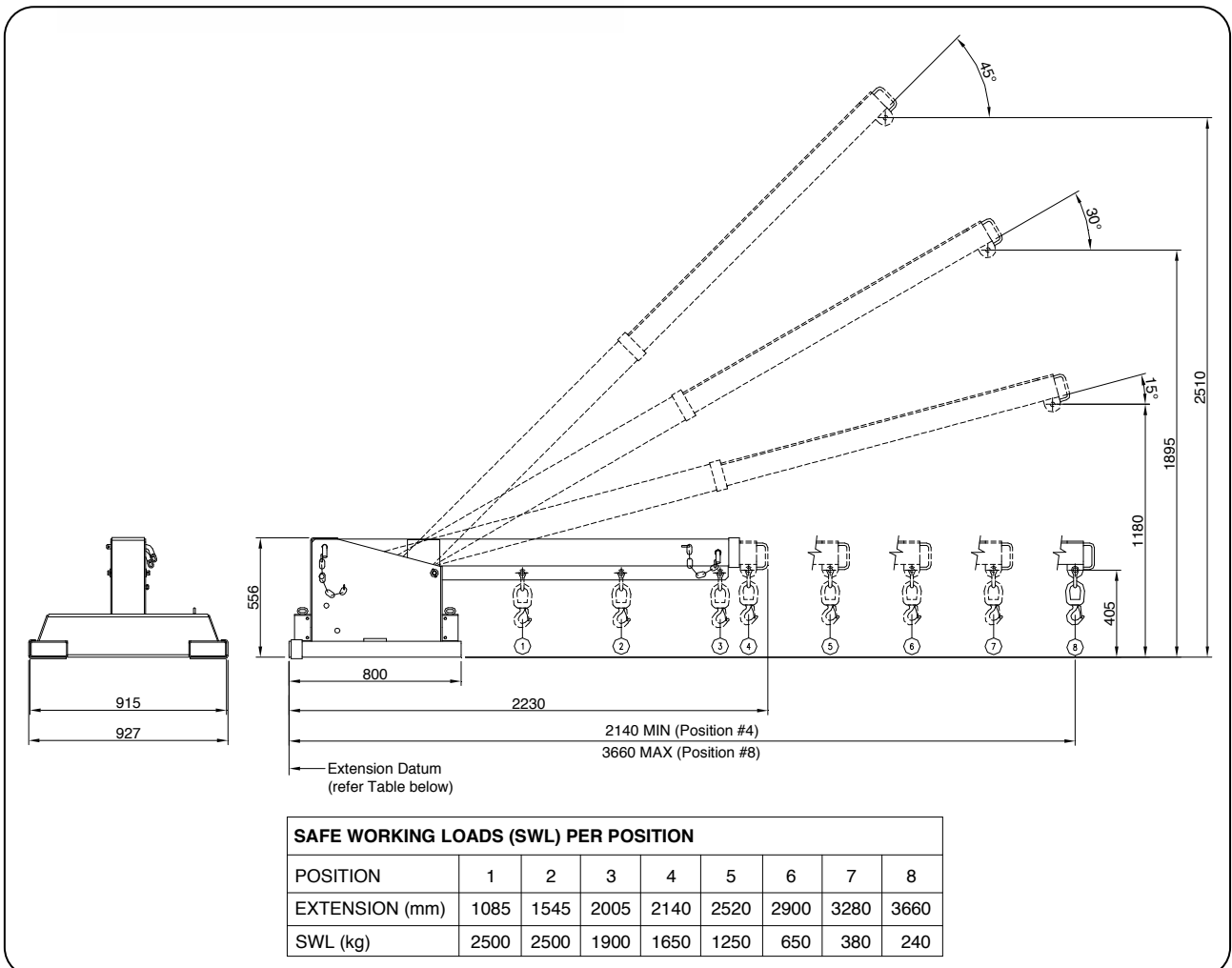


The type STJL2.5 Tilt Jib (Long) is one of the most versatile Forklift Jib attachment in our range, allowing extra height to 2.51 metres, with a 3.66 metre reach when fully extended. This Jib has been designed with wide pockets suitable for Forklifts with special hydraulic Tine Positioners. This slip-on attachment is held to the Forklift by a safety chain. The Jibs overall length when closed is 2.23 metres.

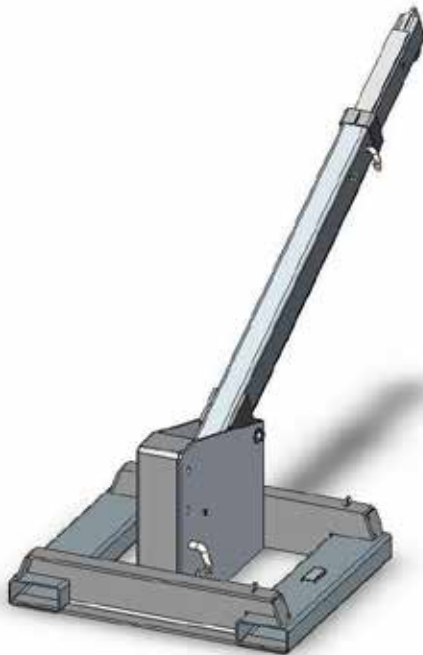
Supplied with safety swivel Hook and Shackle.

SPECIFICATIONS:

- Safe Working Load (SWL) 2500kg Max.
- Unit Weight 205kg
- Load Centre 1085mm
- Pocket Size 165 x 65
- Pocket Centres 740 mm
- Horizontal C of G 1350mm
- Vertical C of G 380mm
- Zinc Finish



Type STJL5 Tilt Jib (Long)

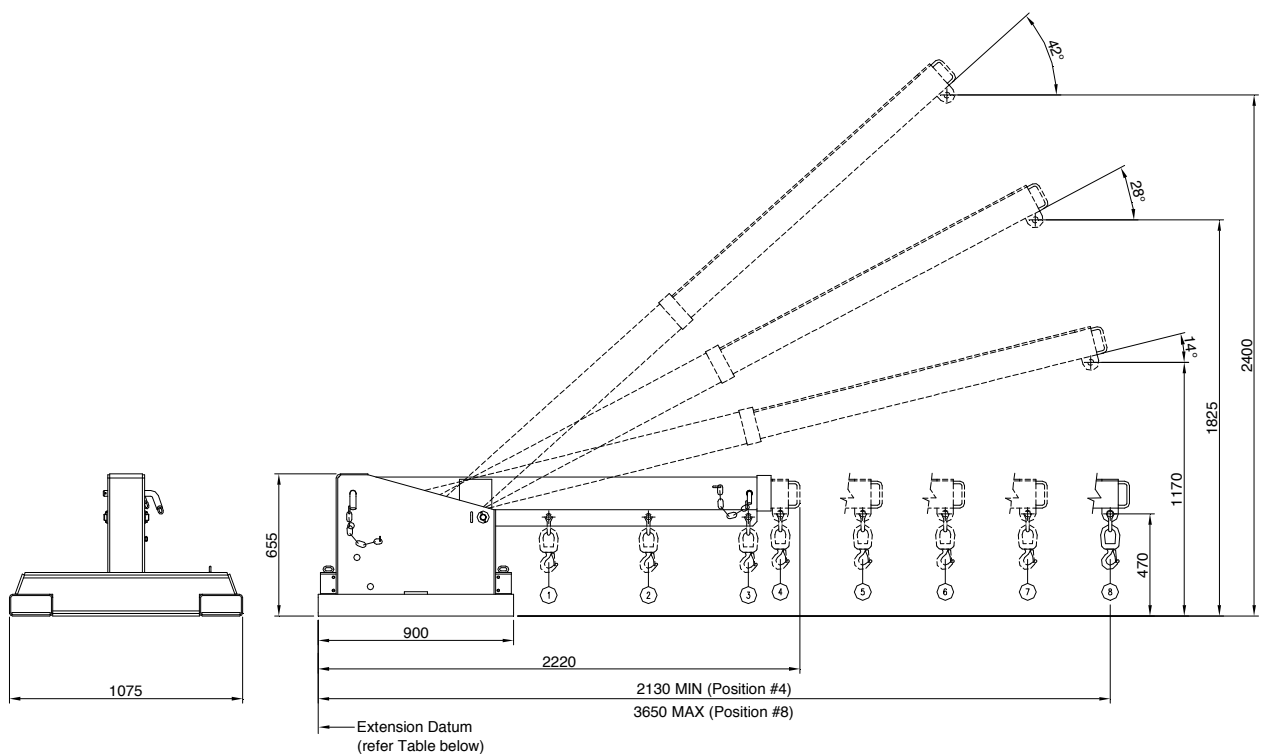


The type STJL5 Tilt Jib (Long) is one of the most versatile Forklift Jib attachment in our range, allowing extra height to 2.40 metres, with a 3.65 metre reach when fully extended. This Jib has been designed with wide pockets suitable for Forklifts with special hydraulic Tine Positioners. This slip-on attachment is held to the Forklift by a safety chain. The Jibs overall length when closed is 2.22 metres.

Supplied with safety swivel Hook and Shackle.

SPECIFICATIONS:

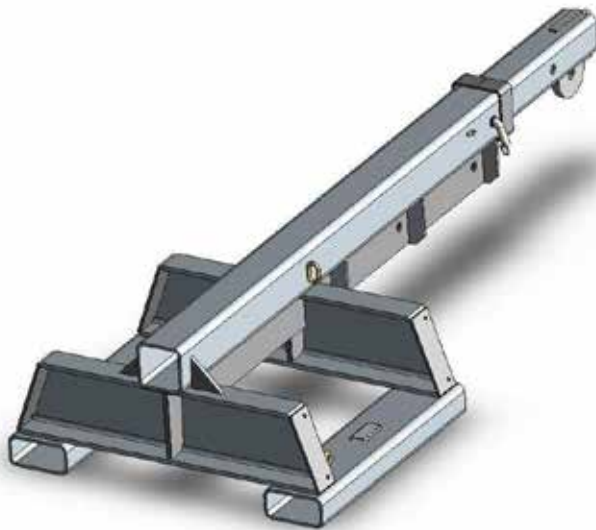
- Safe Working Load (SWL) 4750kg Max.
- Unit Weight 270kg
- Load Centre 1060mm
- Pocket Size 185 x 75
- Pocket Centres 875 mm
- Horizontal C of G 1350mm
- Vertical C of G 380mm
- Zinc Finish



SAFE WORKING LOADS (SWL) PER POSITION								
POSITION	1	2	3	4	5	6	7	8
EXTENSION (mm)	1060	1520	1980	2130	2510	2890	3270	3650
SWL (kg)	4750	4275	3800	3300	2500	1300	760	480

Type SFJL7.5 Fixed Jib (Long)

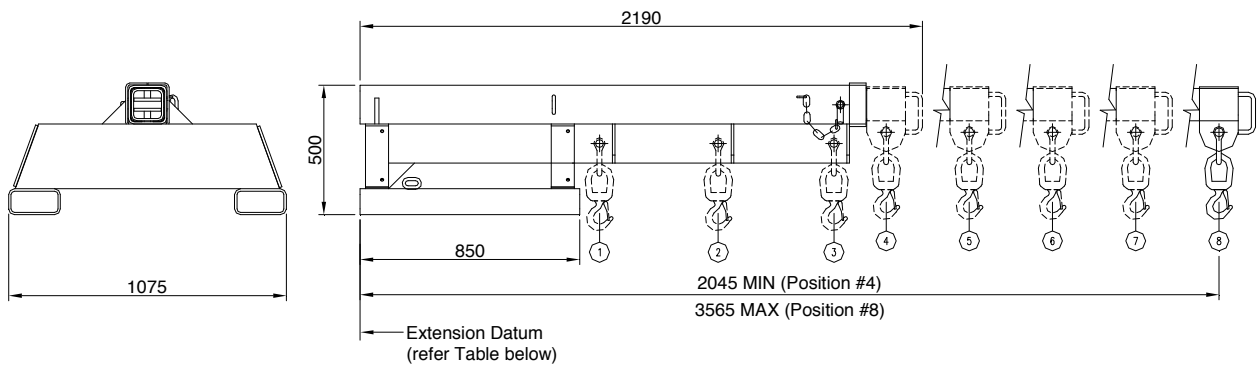
The type SFJL7.5 Fixed Jib (Long) is designed as an affordable general purpose Jib with a 3.56 metre reach when fully extended. This Jib has been designed with wide pockets suitable for Forklifts with special hydraulic Tine Positioners. This slip-on Forklift attachment is held to the Forklift by a safety chain. The Jibs overall length when closed is 2.19 metres.



Supplied with safety swivel Hook and Shackle.

SPECIFICATIONS:

- Safe Working Load (SWL) 7500kg Max.
- Unit Weight 450kg
- Load Centre 920mm
- Pocket Size 180 x 80
- Pocket Centres 875 mm
- Horizontal C of G 1200mm
- Vertical C of G 100mm
- Zinc Finish



SAFE WORKING LOADS (SWL) PER POSITION

POSITION	1	2	3	4	5	6	7	8
EXTENSION (mm)	920	1380	1805	2045	2425	2805	3185	3565
SWL (kg)	7500	6410	5700	4950	3750	1950	1140	720