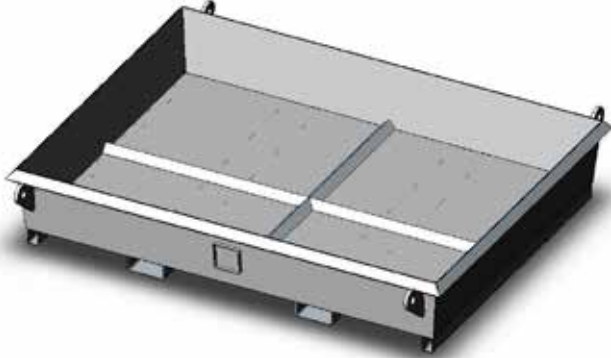


Type CC215 Concrete Collection Tray

The type CC215 Concrete Collection Tray has been designed to limit environmental damage wherever a concrete pump is being used on site. This low profile tray fits under the concrete pump to collect spillage washout water and concrete waste.



The Tray is fitted with Fork Pockets and Crane Lugs and is manufactured with tapered sides. The overall size of the Tray is 2070 x 1570 x 375mm.

The standard finish on the Tray is enamel painted.

SPECIFICATIONS:

- Safe Working Load: 1500kg
- Unit Weight: 200kg
- HCG: 785mm
- Capacity: 0.85 cu. m

