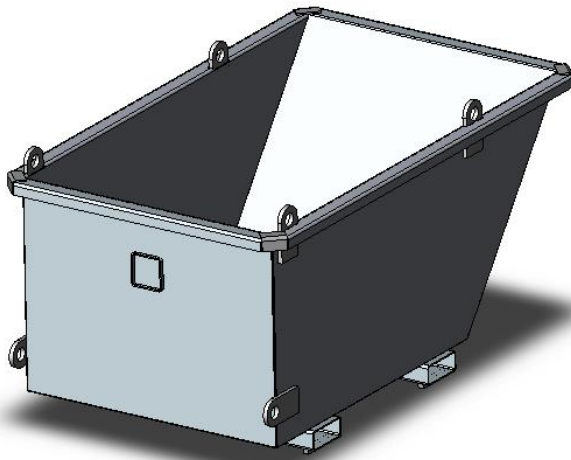


## Type CB20 Crane Bin



The type CB20 Crane Bin is manufactured from 5mm plate to allow transport of heavy waste such as sand, gravel, excavation waste and scrap metal.

The Bin comes standard with 6 crane lugs and transport Slippers. Wheels may be fitted as an option.

### SPECIFICATIONS:

- Safe Working Load (SWL) 2000kg
- Unit Weight 310kg
- Volume Capacity (level) 1.25 cu m
- Pocket size 165 x 65mm
- Pocket Centres 725mm
- Wheels Optional

